

XXC105 electrical connector

user's manual

(Version S0.0)





Zhejiang Xinxì Electronic Technology Co., Ltd.

Zhejiang Xin Xi Electronic Technology Co.,Ltd.

table of Contents

- 1. XXC105 electrical connector model and main technical indicators**
- 2. XXC105 electrical connector shape and dimensions**
- 3. Installation of XXC105 electrical connector**

Address: Yongxing 1st Road, Chengdong Industrial Function Zone, Yueqing City, Zhejiang Province 7 number

phone: 0577-57179925

fax: 0577-57179917

URL: www.xinxikjcn.com

mailbox: xinxi@xinxikjcn.com



Zhejiang Xinxi Electronic Technology Co., Ltd.

Zhejiang Xin Xi Electronic Technology Co.,Ltd.

1. Electrical connector model and main technical indicators:

1. Connector model:

sequence number	Name, model	serial number	Number of cores	Socket termination,	Wiring specifications		Is it high Pressure interlock	colour	Remarks (Previous model)
				Installation method	Power parts-	Signal piece			
1	XXC105-EV-S2TA plug	XX105-01-00-00A	2+2	- -	1 ~ 2.5mm ₂	0.5mm ₂	Yes	Orange	HV1-T2K(16A)-01
	XXC105-EV-P22A socket	XX105-02-00-00A	2+2	Crimp, front panel installation	1 ~ 2.5mm ₂	0.5mm ₂	Yes	Orange	HV1-Z2J(16A)-01
2	XXC105-EV-S2TB plug	XX105-01-00-00B	2+2	- -	2.5 ~ 6mm ₂	0.5mm ₂	Yes	Orange	HV1-T2K(40A)-00
	XXC105-EV-P22B socket	XX105-02-00-00B	2+2	Crimp, front panel installation	2.5 ~ 6mm ₂	0.5mm ₂	Yes	Orange	HV1-Z2J(40A)-00
3	XXC105-EV-S3TC plug	XX105-01-00-00C	3+2	- -	1 ~ 2.5mm ₂	0.5mm ₂	Yes	Orange	HV1-T3K(16A)-01
	XXC105-EV-P32C socket	XX105-02-00-00C	3+2	Crimp, front panel installation	1 ~ 2.5mm ₂	0.5mm ₂	Yes	Orange	HV1-Z3J(16A)-01
4	XXC105-EV-S2TD plug	XX105-01-00-00D	2+2	- -	2.5 ~ 6mm ₂	0.5mm ₂	Yes	black	— —
	XXC105-EV-P22D socket	XX105-02-00-00D	2+2	Crimp, front panel installation	2.5 ~ 6mm ₂	0.5mm ₂	Yes	black	— —

2. Main technical indicators:

a. Main materials:

■ Shell: Engineering plastic (UL94-V0)

■ Contact: Copper alloy Table: Silver plated

b. Mechanical properties:

■ Mechanical life: 500 times

Address: Yongxing 1st Road, Chengdong Industrial Function Zone, Yueqing City, Zhejiang Province 7 number

phone: 0577-57179925

fax: 0577-57179917

URL: www.xinxikjcn.com

mailbox: xinxi@xinxikjcn.com



Zhejiang Xinxi Electronic Technology Co., Ltd.

Zhejiang Xin Xi Electronic Technology Co.,Ltd.

c. Electrical performance:

■ Rated working current: Power parts: 5A (cable 1mm²) 15A (cable 2.5mm²)

25A (cable 4mm²) 35A (cable 6mm²)

Signal part: 1A (cable 0.5mm²)

■ Rated voltage: Power unit: 630V (AC/DC) Signal: 5~24V (AC/DC)

■ Withstand Voltage: Power unit: 3000V (AC) (normal) Signal unit: 300V (AC/DC)

■ Insulation resistance: Power parts: $\geq 5000\text{M}\Omega$ (normal) Signal parts: $\geq 500\text{M}\Omega$ (normal)

■ Contact resistance: Power parts: $\leq 1.5\text{m}\Omega$ Signal parts: $\leq 10\text{m}\Omega$

d. Working environment:

■ Temperature range: $-40^{\circ}\text{C} \sim +125^{\circ}\text{C}$

■ Humidity: 95% (at 40°C)

■ Vibration: Low frequency/amplitude: 10Hz~55Hz/ $\pm 0.75\text{mm}$; High frequency/acceleration: 55Hz~500Hz/10g

■ Protection level: IP67 (connector mating state)

Address: Yongxing 1st Road, Chengdong Industrial Function Zone, Yueqing City, Zhejiang Province 7 number

phone: 0577-57179925

fax: 0577-57179917

URL: www.xinxikjcn.com

mailbox: xinxi@xinxikjcn.com

2. XXC105 electrical connector shape and dimensions

shape:

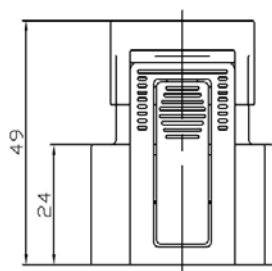
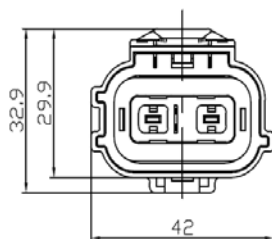


XXC105-EV-S2TA plug

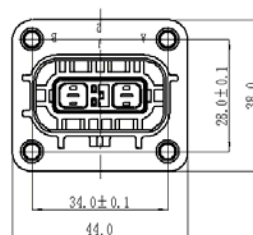
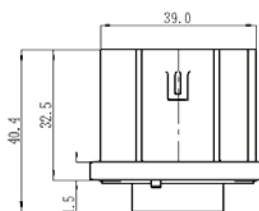


XXC105-EV-P2ZA socket

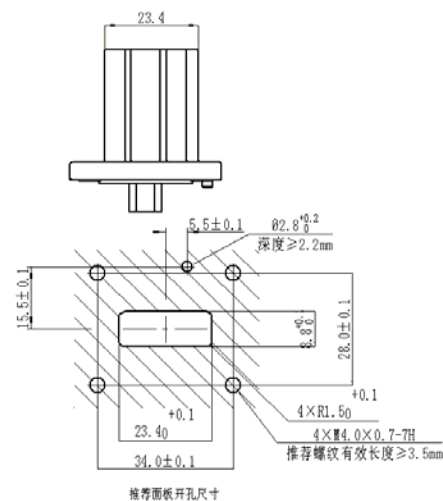
Dimensions:



XXC105-EV-S2TA plug



XXC105-EV-P2ZA socket



shape:

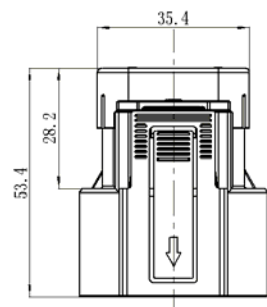
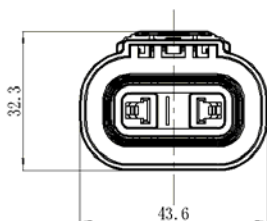


XXC105-EV-S2TB plug

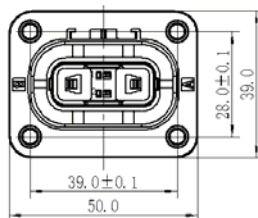
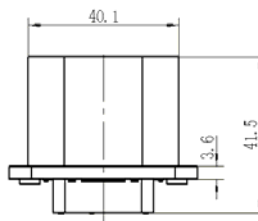
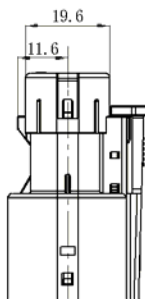


XXC105-EV-P2ZB socket

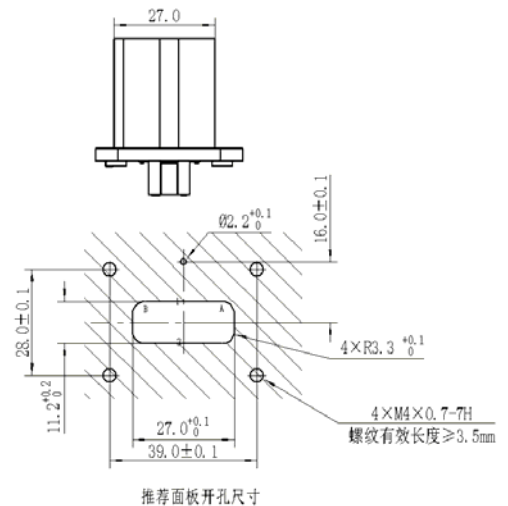
Dimensions:



XXC105-EV-S2TB/D plug



XXC105-EV-P2ZB/D socket



Remarks: XXC105-EV-S2TD plug and XXC105-EV-S2TB plug, XXC105-EV-P2ZD socket and XXC105-EV-P2ZB socket are only different in color and

appearance, and the external dimensions are the same.

shape:

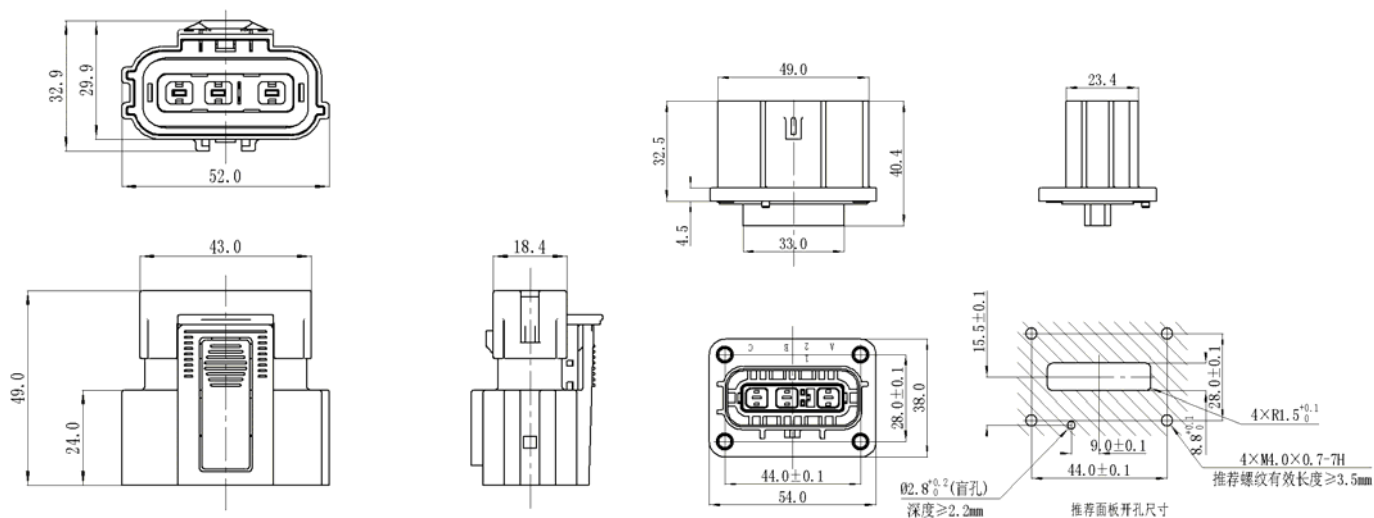


XXC105-EV-S3TC plug



XXC105-EV-P3ZC socket

Dimensions:



XXC105-EV-S3TC plug

XXC105-EV-P3ZC socket

3. Installation of XXC105 electrical connector

The structure of this series of products is similar. Take XXC105-EV-S2TB plug and XXC105-EV-P2ZB socket as examples below.

1. Installation of the plug:

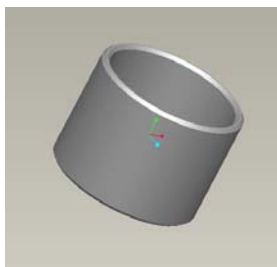
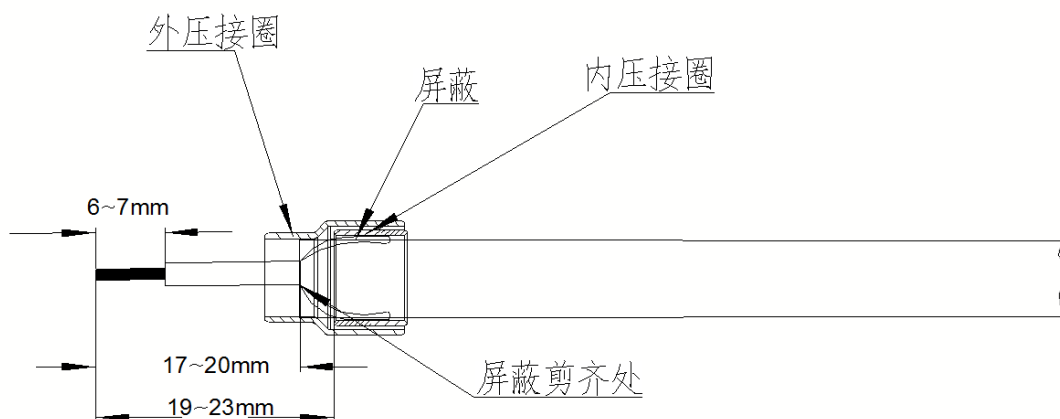
Connection method of shielded wire:

1.1 Crimp:

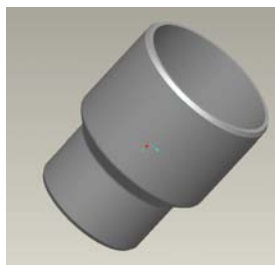
a. Stripping: Strip the 17-20mm outer insulating rubber of the shielded cable, and strip the core of 6-7mm;

b. Crimping: Flip the shield out and use the inner crimping ring to compress it, and then tighten the outer crimping ring, and then connect the terminal to the wire; thread th

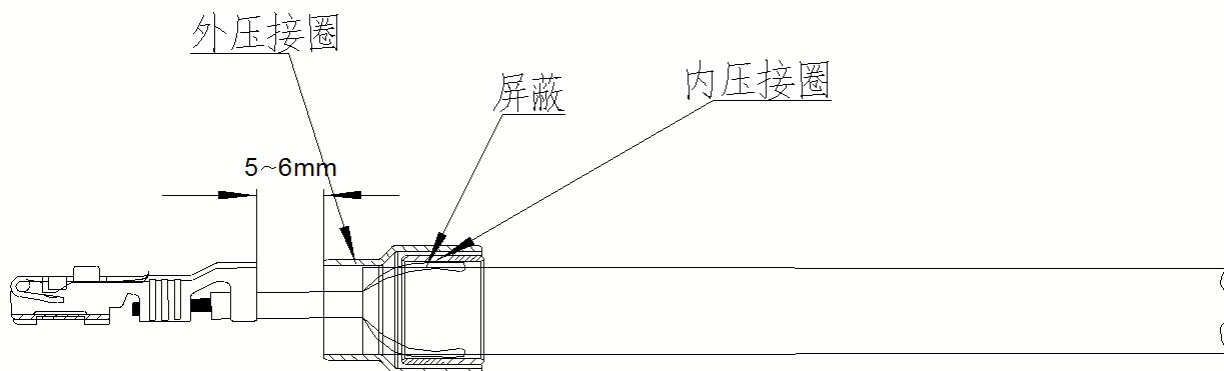
Enter into the jack for crimping, and the pull-off force is shown in the following table (in accordance with the technical requirements of QCT 29106-2014 automotive wiring



Inner crimping ring

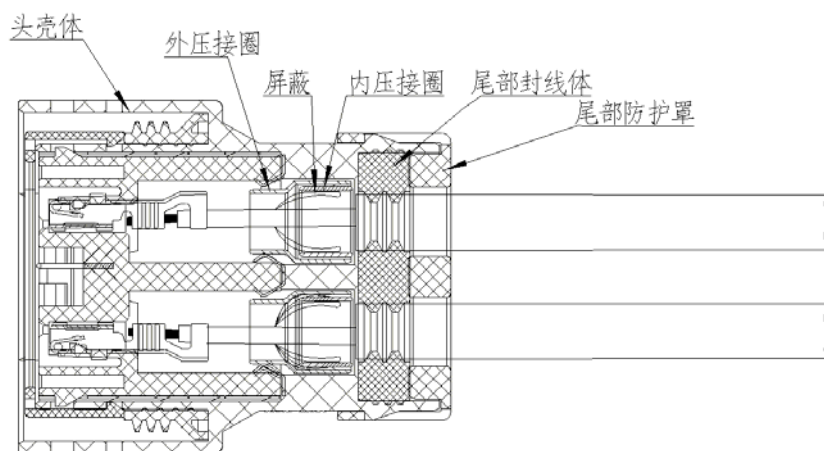


External crimping ring



Serial number	Cable specifications	Pull off force (N)
1	0.5 mm ²	≥70N
2	1mm ²	≥110N
3	2.5mm ²	≥200N
4	4 mm ²	≥270N
5	6 mm ²	≥450N

C. Put the tail sealing body and the tail shield into the wire in turn, and install the crimped parts into the head shell;

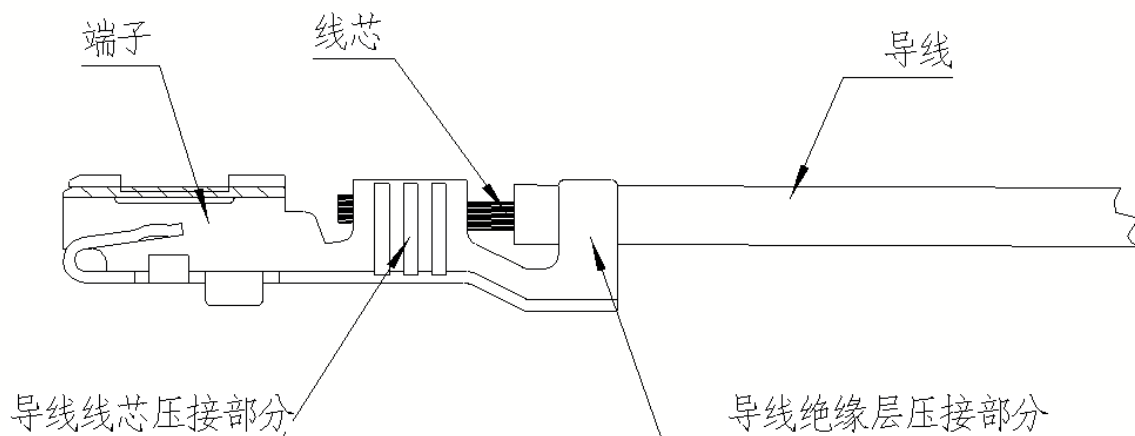


Connection method of unshielded wire:

a. Stripping: the core is stripped 6~7mm;

b. Crimping: thread the cable into the jack for crimping, the pull-off force is the same as the above table (in accordance with QCT 29106-2014 automotive wire

Technical conditions);



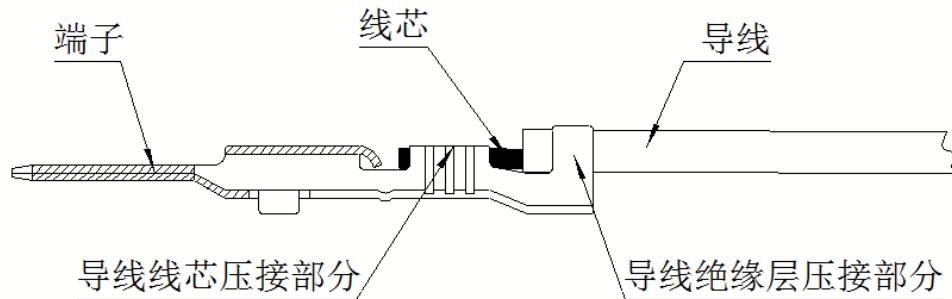
C. Put the tail sealing body and the tail shield into the wire in turn, and install the crimped parts into the head shell;

2. Socket installation:

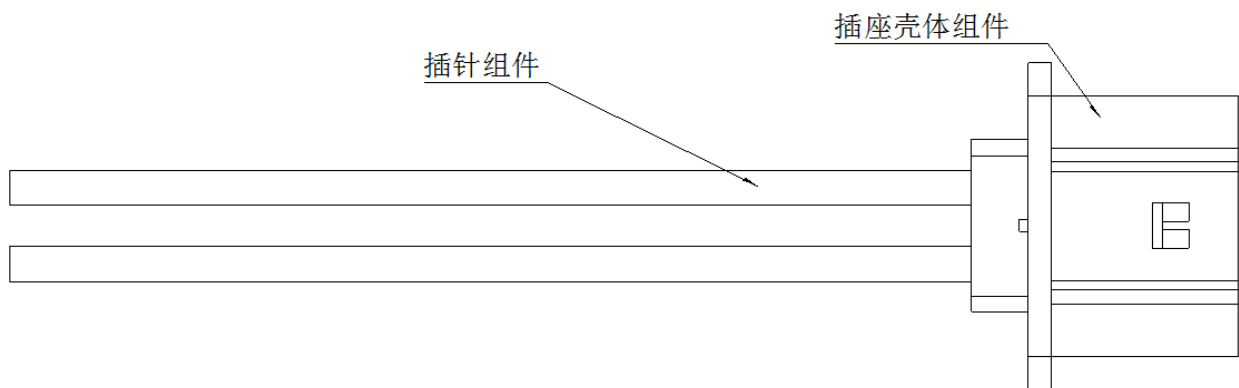
2.1 Crimp:

a. Stripping: Strip the 6 ~ 7mm outer insulating rubber of the cable;

b. Thread the cable into the pin for crimping, and the pull-off force is as shown in the above table (in accordance with QCT 29106-2014 automotive wiring harness technio

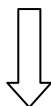


2.2 Put the crimped parts into the housing of the seat, as shown in the figure below:

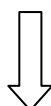
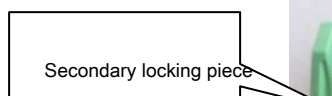


3. Plug and socket:

3.1 Align the plug and socket, and insert the plug into the socket, as shown in the figure below:

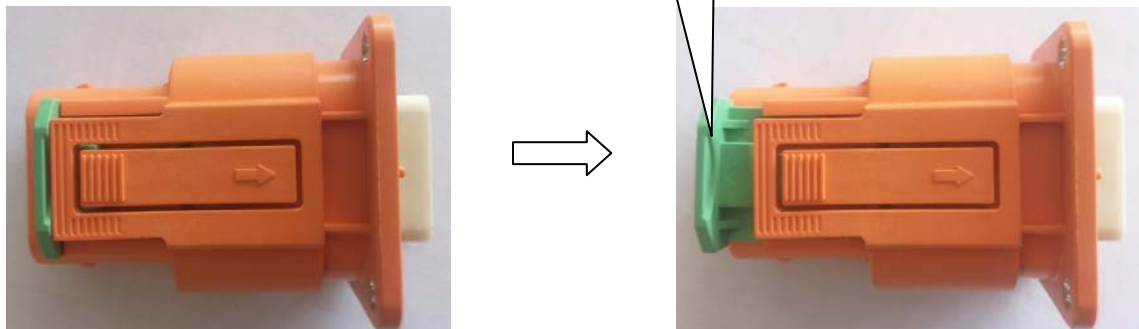


3.2 Press in the locking piece to perform secondary locking, as shown in the figure below:



4. Separate plug and socket:

4.1 Pull open the locking block, as shown in the figure below:



4.2 Separate the plug and socket, as shown in the figure below:

